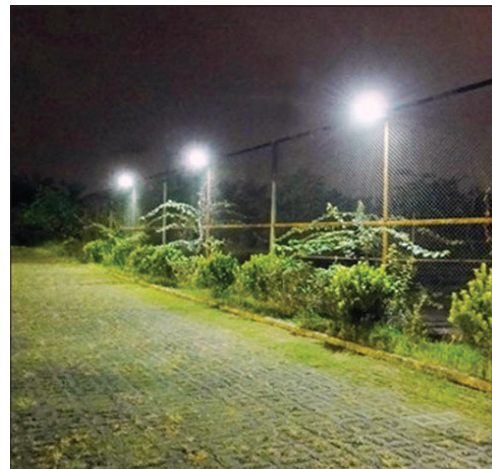




Solar Security/Flood Light 2 Aluminium powdercoated to a satin black finish

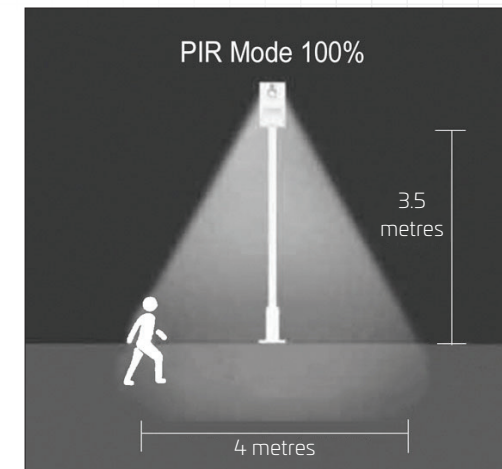
Eco Solar Lights



Suitable for lighting large areas



Suitable for wall or post mounting



Features

- Commercial grade solar lighting
- Requires 10 - 12 hours charging prior to use
- 10 to 12 hour light output
- High quality inbuilt LiFe PO4 battery
- Mounting Height: 3 to 4 metres
- Ideal for illuminating larger areas
- Auto PIR operation*
- Custom brackets or poles manufactured on request
- Warranty: 1 year warranty for faulty workmanship or component failure not influenced by external means

Specifications

- | | | | |
|---------------|--------------------------|--------------------|-----------------------------------|
| • Colour | Powdercoat satin black | • Solar Panel | 9V 7watts |
| • Charge Time | 4 - 8 hours | • Solar Panel Size | 285mm x 237mm |
| • CCT | 6500K (cool white) | • Light Source | 40 high intensity CREE chips |
| • Size | 520H x 280Wmm | • Battery | LiFePO4 battery |
| • Brightness | Approx. 800 lumen output | • Material | Aluminium, polycarbonate diffuser |

What is a Lumen?

In simple terms, lumens are a measure of the total amount of visible light from a lamp or light source. The higher the lumen rating, the "brighter" the lamp will appear.

How does this compare with other light sources?

Familiar examples • A typical 4 x D cell battery maglite will emit approx. 70 lumens

* The P.I.R (passive infrared) sensor is activated by movement and acts as a power saving feature.

The flood light will operate at 30% output until the PIR is activated where it will operate at 100% until no movement is detected returning to 30% output.

- Wall or pole mountable (pole not included)
- Solar Panel on reverse side
- Inbuilt LiFePO4 battery
- 40 high intensity LEDs encased in clear light diffuser
- PIR motion sensor

